

# ***PRODUCT CATALOG***





# STORMTECH SUBSURFACE STORMWATER MANAGEMENT

## TABLE OF CONTENTS

Product Features and Benefits ..... 5

SC-160LP ..... 6

SC-310 ..... 8

SC-310-3 ..... 10

SC-740 ..... 12

DC-780 ..... 14

MC-3500 ..... 16

MC-4500 ..... 18

Isolator® Row PLUS. .... 20

Products and Services ..... 22



The ADS StormTech Design Tool will help designers, owners and contactors design conceptual layouts and cost estimates.

Now available at <https://designtool.ads-pipe.com>



## STORMTECH SUBSURFACE STORMWATER MANAGEMENT

StormTech has thousands of chamber systems in service throughout the world. All StormTech chambers are designed to meet the most stringent industry performance standards for superior structural integrity. The StormTech system is designed primarily to be used under parking lots, roadways and heavy earth loads saving valuable land and protecting water resources for commercial and municipal applications. In our continuing desire to answer designers' challenges, StormTech has expanded the family of products providing engineers, developers, regulators and contractors with additional site specific flexibility.

### ADVANCED STRUCTURAL PERFORMANCE FOR GREATER LONG-TERM RELIABILITY

**StormTech developed a state of the art chamber design through:**

- Collaboration with world-renowned experts of buried drainage structures to develop and evaluate the structural testing program and product design
- Designing chambers to exceed American Association of State Highway and Transportation Officials (AASHTO) LRFD design specifications for HS-20 live loads and deep burial earth loads
- Subjecting the chambers to rigorous full scale testing, under severe loading conditions to verify the AASHTO safety factors for live load and deep burial applications
- Designing chambers to conform to the product requirements of ASTM F2418 and ASTM F2922 and design requirements of ASTM F2787 ensuring both the assurance of product quality and safe structural design

### OUR CHAMBERS PROVIDE

- Large capacity that **fits very tight footprints** providing developers with more usable land for development
- A proven attenuation alternative to cumbersome large diameter metal pipe or snap together plastic crates and unreliable multi-layer systems
- Provides the strength of concrete vaults at a very competitive price
- The **robust continuous true elliptical arch design**, which effectively transfers loads to the surrounding backfill providing the long-term safety factors required by AASHTO. Offers developers a cost-effective underground system that will perform as designed for decades.
- **Designed in accordance with the AASHTO LRFD Bridge Design Specifications** providing engineers with a structural performance standard for live and long-term dead loads
- **Polypropylene and polyethylene** resins tested using ASTM standards to ensure long and short-term structural properties
- **Injection molded** for uniform wall thickness and repeatable quality
- Third-party **tested and patented Isolator Row PLUS** for less frequent maintenance, water quality and long-term performance
- Incorporates **traditional manifold/header designs** using conventional hydraulic equations that can easily verify flow equalization and scour velocity
- **Open chamber design** requiring only one chamber model to construct each row assuring ease of construction and no repeating end walls to obstruct access or flow.

StormTech offers a variety of chamber sizes (**SC-160LP, SC-310, SC-740, DC-780, MC-3500 and MC-4500**) so the consulting design engineer can choose the chamber that is best suited for the site conditions and regulatory requirements. StormTech has thousands of chamber systems in service worldwide. We provide plan layout and cost estimate services at no charge for consulting engineers and developers.

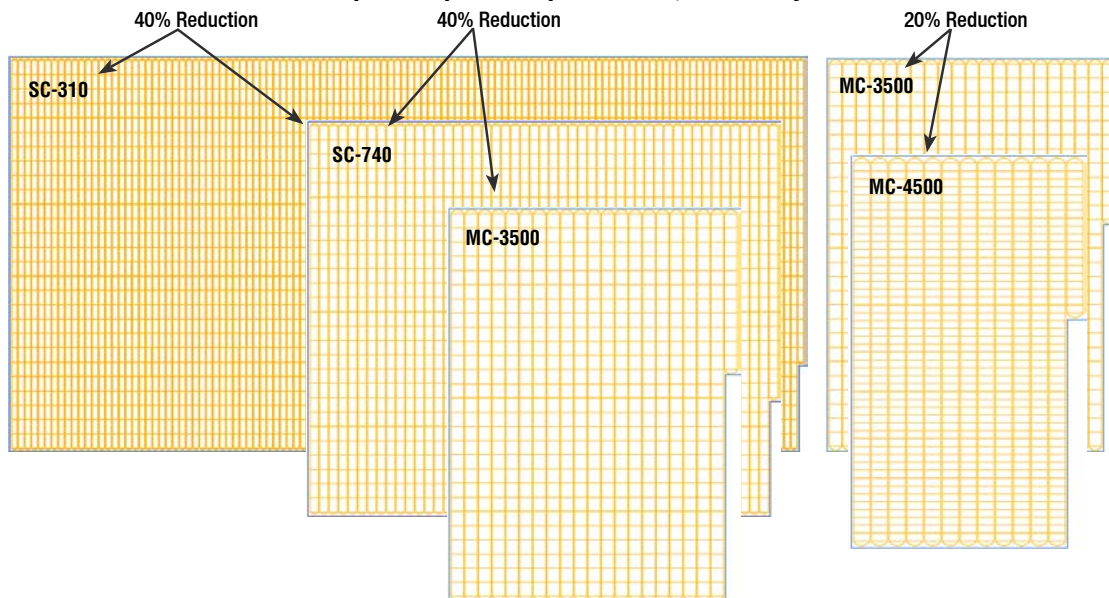


## STORMTECH SUBSURFACE STORMWATER MANAGEMENT



Product Specifications	MC-4500	MC-3500	DC-780	SC-740	SC-310	SC-160LP
Height, in. (mm)	60 (1524)	45 (1143)	30 (762)	30 (762)	16 (406)	12 (305)
Width, in. (mm)	100 (2540)	77 (1956)	51 (1295)	51 (1295)	34 (864)	25 (635)
Length, in. (mm)	52 (1321)	90 (2286)	90.7 (2300)	90.7 (2300)	90.7 (2300)	90.7 (2300)
Installed length, in. (mm)	48.3 (1227)	86.0 (2184)	85.4 (2170)	85.4 (2170)	85.4 (2170)	85.4 (2170)
Bare Chamber Storage, cf (cm)	106.5 (3.01)	109.9 (3.11)	46.2 (1.30)	45.9 (1.30)	14.7 (0.42)	6.85 (0.19)
Stone above, in. (mm)	12 (305)	12 (305)	6 (152)	6 (152)	6 (152)	6 (152)
Minimum stone below, in. (mm)	9 (229)	9 (229)	9 (229)	6 (152)	6 (152)	4 (100)
Row spacing, in. (mm)	9 (229)	6 (152)	6 (152)	6 (152)	6 (152)	N/A
Minimum installed storage, cf (cm)	162.6 (4.60)	175.0 (4.96)	78.4 (2.22)	74.9 (2.12)	31.0 (0.39)	15.0 (0.42)
Storage per unit area, cf/sf (cm/sm)	4.45 (1.35)	3.53 (1.08)	2.32 (0.70)	2.21 (0.67)	1.31 (0.39)	1.01 (0.30)

**Example: Footprint Comparison-100,000 CF Project**



## STORMTECH SC-160LP CHAMBER

Designed to meet the most stringent industry performance standards for superior structural integrity while providing designers with a cost-effective method to save valuable land and protect water resources. The StormTech system is designed primarily to be used under parking lots, thus maximizing land usage for commercial and municipal applications. StormTech chambers can also be used in conjunction with Green Infrastructure, thus enhancing the performance and extending the service life of these practices.

The SC-160LP chamber was developed for infiltration and detention in shallow cover applications

- Only 14" (350 mm) required from top of chamber to bottom of pavement
- Only 12" (300 mm) tall
- Installs toe to toe—no additional spacing between rows

### StormTech SC-160LP (not to scale)

#### Nominal Chamber Specifications

Size (LxWxH)	85.4" x 25.0" x 12.0" (2170 x 635 x 305 mm)
Chamber Storage	6.85 ft <sup>3</sup> (0.19 m <sup>3</sup> )
Min. Installed Storage*	15.0 ft <sup>3</sup> (0.42 m <sup>3</sup> )
Weight	24.0 lbs. (10.9 kg)

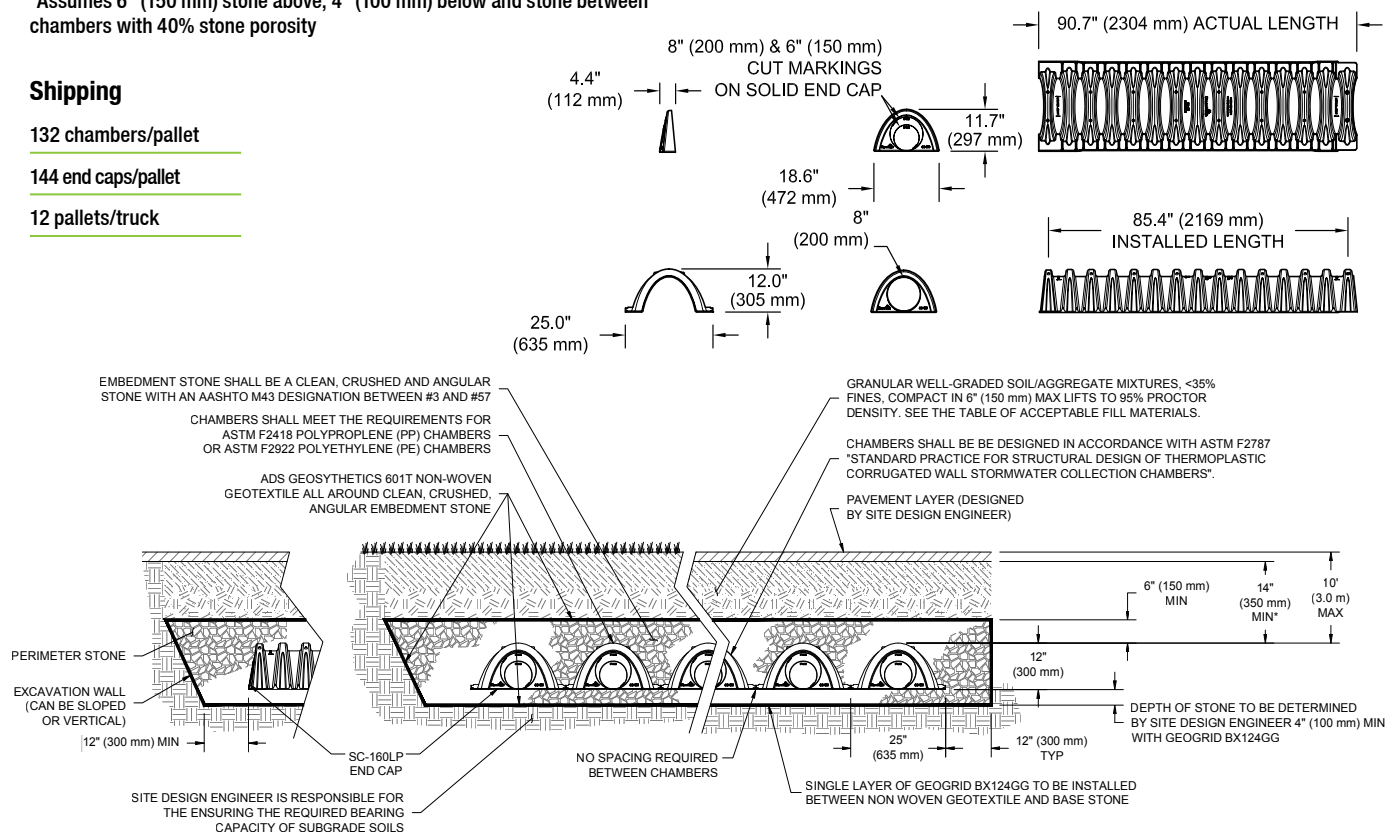
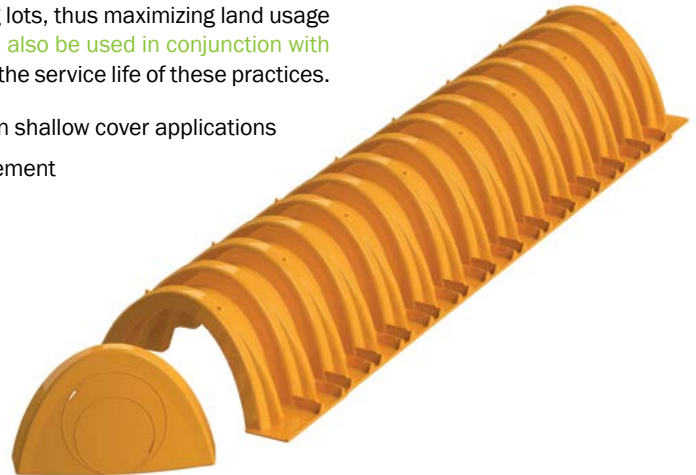
\*Assumes 6" (150 mm) stone above, 4" (100 mm) below and stone between chambers with 40% stone porosity

#### Shipping

132 chambers/pallet

144 end caps/pallet

12 pallets/truck



\*MINIMUM COVER TO BOTTOM OF FLEXIBLE PAVEMENT. FOR UNPAVED INSTALLATIONS WHERE RUTTING FROM VEHICLES MAY OCCUR, INCREASE COVER TO 20" (510 mm).

THE INSTALLED CHAMBER SYSTEM SHALL PROVIDE THE LOAD FACTORS SPECIFIED IN THE AASHTO LRFD BRIDGE DESIGN SPECIFICATIONS SECTION 12.12 FOR EARTH AND LIVE LOADS, WITH CONSIDERATION FOR IMPACT AND MULTIPLE VEHICLE PRESENCES.

## SC-160LP CUMULATIVE STORAGE VOLUMES PER CHAMBER

Assumes 40% Stone Porosity. Calculations are Based Upon a 4" (100 mm) Stone Base Under Chambers.

Depth of Water in System Inches (mm)		Cumulative Chamber Storage ft <sup>3</sup> (m <sup>3</sup> )	Total System Cumulative Storage ft <sup>3</sup> (m <sup>3</sup> )
22 (559)	↑	6.85 (0.194)	14.98 (0.424)
21 (533)		6.85 (0.194)	14.49 (0.410)
20 (508)	Stone	6.85 (0.194)	14.00 (0.396)
19 (483)	Cover	6.85 (0.194)	13.50 (0.382)
18 (457)		6.85 (0.194)	13.01 (0.368)
17 (432)	↓	6.85 (0.194)	12.51 (0.354)
16 (406)		6.85 (0.194)	12.02 (0.340)
15 (381)		6.80 (0.193)	11.49 (0.325)
14 (356)		6.67 (0.189)	10.92 (0.309)
13 (330)		6.38 (0.181)	10.25 (0.290)
12 (305)		5.94 (0.168)	9.49 (0.269)
11 (279)		5.40 (0.153)	8.67 (0.246)
10 (254)		4.78 (0.135)	7.81 (0.221)
9 (229)		4.10 (0.116)	6.91 (0.196)
8 (203)		3.36 (0.095)	5.97 (0.169)
7 (178)		2.58 (0.073)	5.01 (0.142)
6 (152)		1.76 (0.050)	4.02 (0.114)
5 (127)		0.89 (0.025)	3.01 (0.085)
4 (102)	↑	0 (0)	1.98 (0.056)
3 (76)	Stone	0 (0)	1.48 (0.042)
2 (51)	Foundation	0 (0)	0.99 (0.028)
1 (25)	↓	0 (0)	0.49 (0.014)

**Note:** Add 0.49 ft<sup>3</sup> (0.014 m<sup>3</sup>) of storage for each additional inch (25 mm) of stone foundation.

## AMOUNT OF STONE PER CHAMBER

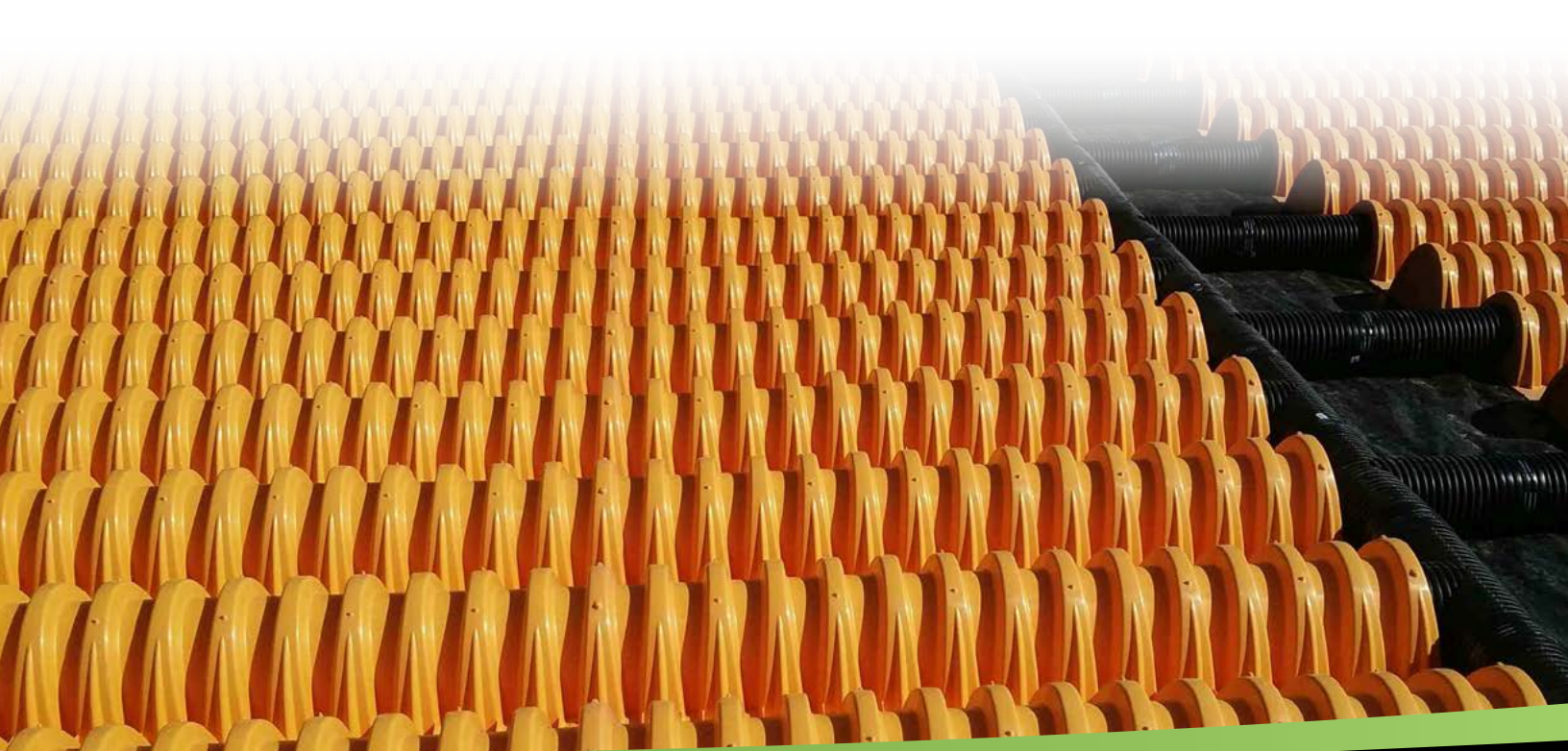
ENGLISH TONS (yds <sup>3</sup> )	Stone Foundation Depth		
	4"	6"	8"
StormTech SC-3160LP	1.1 (0.8)	1.2 (0.9)	1.3 (0.9)
METRIC KILOGRAMS (m <sup>3</sup> )	100 mm	150 mm	200 mm
StormTech SC-3160LP	952 (0.7)	1,074 (0.8)	1,197 (0.8)

**Note:** Assumes 6" (150 mm) of stone above and only embedment stone between chambers.

## VOLUME EXCAVATION PER CHAMBER YD<sup>3</sup> (M<sup>3</sup>)

	Stone Foundation Depth		
	4" (100)	8" (200)	12" (300)
StormTech SC-160LP	1.4 (1.1)	1.6 (1.2)	1.8 (1.3)

**Note:** Assumes no row separation and 14" (350 mm) of cover. The volume of excavation will vary as depth of cover increases.





## STORMTECH SC-310 CHAMBER

Designed to meet the most stringent industry performance standards for superior structural integrity while providing designers with a cost-effective method to save valuable land and protect water resources. The StormTech system is designed primarily to be used under parking lots, thus maximizing land usage for private (commercial) and public applications. StormTech chambers can also be used in conjunction with Green Infrastructure, thus enhancing the performance and extending the service life of these practices.

### StormTech SC-310 Chamber (not to scale)

#### Nominal Chamber Specifications

Size (L x W x H)	85.4" x 34.0" x 16.0" (2170 x 864 x 406 mm)
Chamber Storage	14.7 ft <sup>3</sup> (0.42 m <sup>3</sup> )
Min. Installed Storage*	31.0 ft <sup>3</sup> (0.88 m <sup>3</sup> )
Weight	37.0 lbs (16.8 kg)

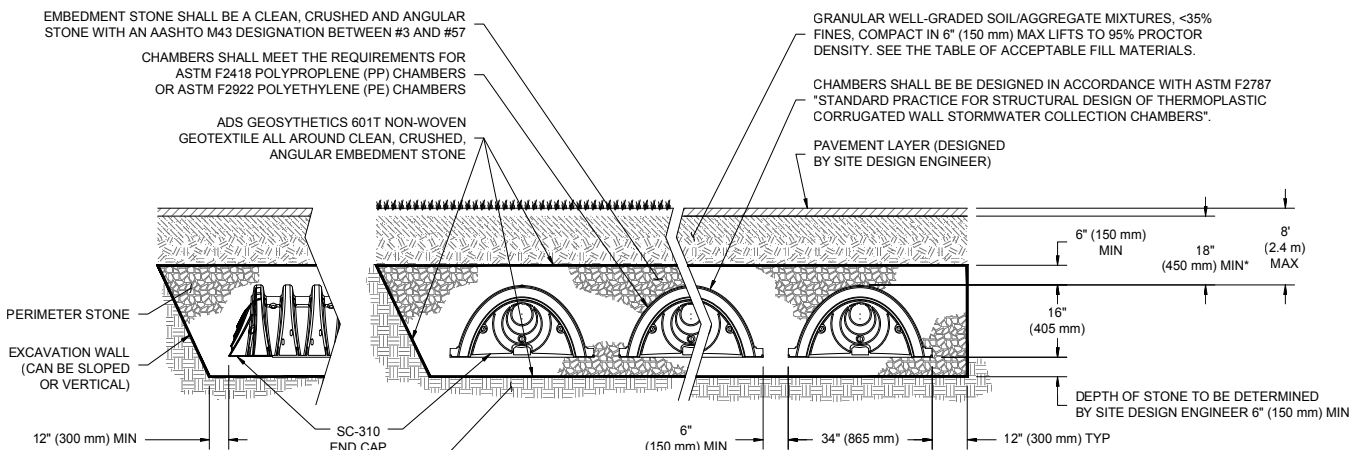
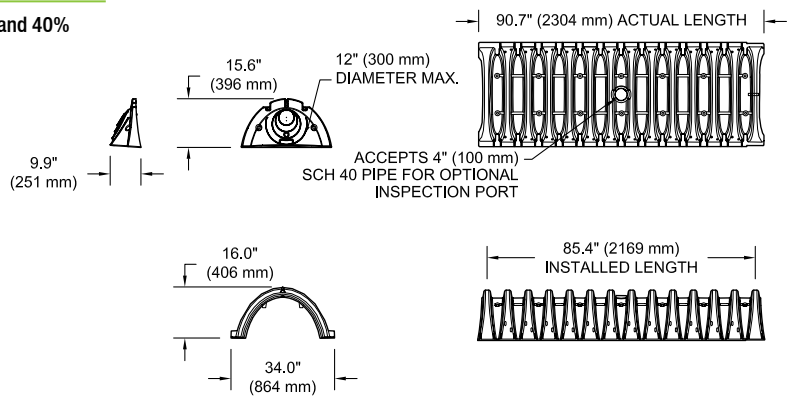
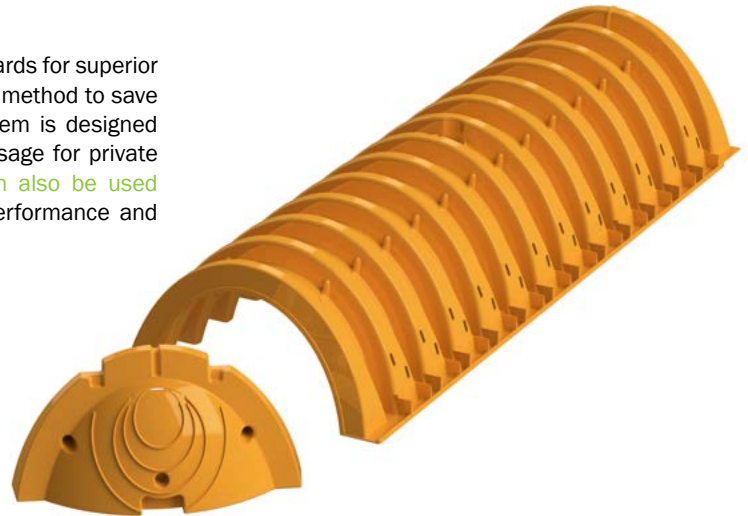
\*Assumes 6" (150 mm) stone above, below and between chambers and 40% stone porosity.

### Shipping

41 chambers/pallet

108 end caps/pallet

18 pallets/truck



\*MINIMUM COVER TO BOTTOM OF FLEXIBLE PAVEMENT. FOR UNPAVED INSTALLATIONS WHERE RUTTING FROM VEHICLES MAY OCCUR, INCREASE COVER TO 24" (600 mm).

THE INSTALLED CHAMBER SYSTEM SHALL PROVIDE THE LOAD FACTORS SPECIFIED IN THE AASHTO LRFD BRIDGE DESIGN SPECIFICATIONS SECTION 12.12 FOR EARTH AND LIVE LOADS, WITH CONSIDERATION FOR IMPACT AND MULTIPLE VEHICLE PRESENCES.

## SC-310 CUMULATIVE STORAGE VOLUMES PER CHAMBER

Assumes 40% Stone Porosity. Calculations are Based Upon a 6" (150 mm) Stone Base Under Chambers.

Depth of Water in System Inches (mm)		Cumulative Chamber Storage ft <sup>3</sup> (m <sup>3</sup> )	Total System Cumulative Storage ft <sup>3</sup> (m <sup>3</sup> )
28 (711)	↑	14.70 (0.416)	31.00 (0.878)
27 (686)		14.70 (0.416)	30.21 (0.855)
26 (680)		14.70 (0.416)	29.42 (0.833)
25 (610)		14.70 (0.416)	28.63 (0.811)
24 (609)		14.70 (0.416)	27.84 (0.788)
23 (584)	↓	14.70 (0.416)	27.05 (0.766)
22 (559)		14.70 (0.416)	26.26 (0.748)
21 (533)		14.64 (0.415)	25.43 (0.720)
20 (508)		14.49 (0.410)	24.54 (0.695)
19 (483)		14.22 (0.403)	23.58 (0.668)
18 (457)		13.68 (0.387)	22.47 (0.636)
17 (432)		12.99 (0.368)	21.25 (0.602)
16 (406)		12.17 (0.345)	19.97 (0.566)
15 (381)		11.25 (0.319)	18.62 (0.528)
14 (356)		10.23 (0.290)	17.22 (0.488)
13 (330)		9.15 (0.260)	15.78 (0.447)
12 (305)		7.99 (0.227)	14.29 (0.425)
11 (279)		6.78 (0.192)	12.77 (0.362)
10 (254)		5.51 (0.156)	11.22 (0.318)
9 (229)		4.19 (0.119)	9.64 (0.278)
8 (203)		2.83 (0.081)	8.03 (0.227)
7 (178)		1.43 (0.041)	6.40 (0.181)
6 (152)		0	4.74 (0.134)
5 (127)		0	3.95 (0.112)
4 (102)		0	3.16 (0.090)
3 (76)	Stone Foundation	0	2.37 (0.067)
2 (51)		0	1.58 (0.046)
1 (25)		0	0.79 (0.022)

Note: Add 0.79 ft<sup>3</sup> (0.022 m<sup>3</sup>) of storage for each additional inch. (25 mm) of stone foundation.

## STORAGE VOLUME PER CHAMBER FT<sup>3</sup> (M<sup>3</sup>)

	Bare Chamber Storage ft <sup>3</sup> (m <sup>3</sup> )	Chamber and Stone Foundation Depth in. (mm)		
		6 (150)	12 (300)	18 (450)
StormTech SC-310	14.7 (0.4)	31.0 (0.9)	35.7 (1.0)	40.4 (1.1)

Note: Assumes 6" (150 mm) of stone above chambers, 6" (150 mm) row spacing and 40% stone porosity.

## AMOUNT OF STONE PER CHAMBER

ENGLISH TONS (yds <sup>3</sup> )	Stone Foundation Depth		
	6"	12"	18"
StormTech SC-310	2.1 (1.5 yd <sup>3</sup> )	2.7 (1.9 yd <sup>3</sup> )	3.4 (2.4 yd <sup>3</sup> )
METRIC KILOGRAMS (m <sup>3</sup> )	150 mm	300 mm	450 mm
StormTech SC-310	1,830 (1.1 m <sup>3</sup> )	2,490 (1.5 m <sup>3</sup> )	2,990 (1.8 m <sup>3</sup> )

Note: Assumes 6" (150 mm) of stone above, and between chambers.

## VOLUME EXCAVATION PER CHAMBER YD<sup>3</sup> (M<sup>3</sup>)

	Stone Foundation Depth		
	6" (150 mm)	12" (300 mm)	18" (450 mm)
StormTech SC-310	2.9 (2.2)	3.4 (2.6)	3.8 (2.9)

Note: Assumes 6" (150 mm) of row separation and 18" (450 mm) of cover. The volume of excavation will vary as the depth of the cover increases.



## STORMTECH SC-310-3 CHAMBER

The proven strength and durability of the SC-310-3 Chamber allows for a design option for sites where limited cover, limited space, high water table and escalated aggregate cost are a factor. The SC-310-3 has a minimum cover requirement of 16" (400 mm) to bottom of flexible pavement and reduces the spacing requirement between chambers by 50% to 3" (76 mm). This provides a reduced footprint overall, reduces aggregate needed, and allows the designer to offer a traffic bearing application yet comply with water table separation regulations. StormTech chambers can also be used in conjunction with Green Infrastructure, thus enhancing the performance and extending the service life of these practices.

### StormTech SC-310-3 Chamber (not to scale)

#### Nominal Chamber Specifications

Size (L x W x H)	85.4" x 34.0" x 16.0" (2,170 x 864 x 406 mm)
Chamber Storage	14.7ft <sup>3</sup> (0.42 m <sup>3</sup> )
Min. Installed Storage*	29.3 ft <sup>3</sup> (0.83 m <sup>3</sup> )
Weight	37.0 lbs (16.8 kg)

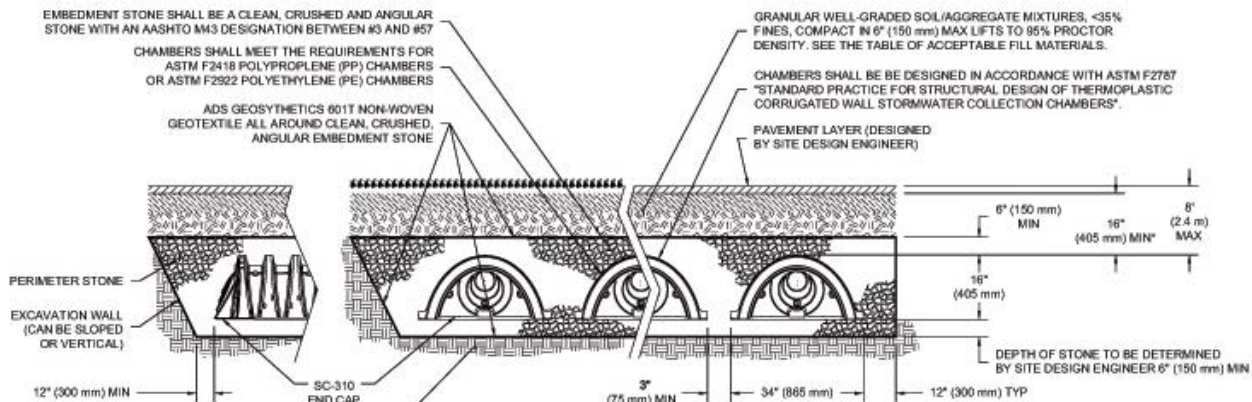
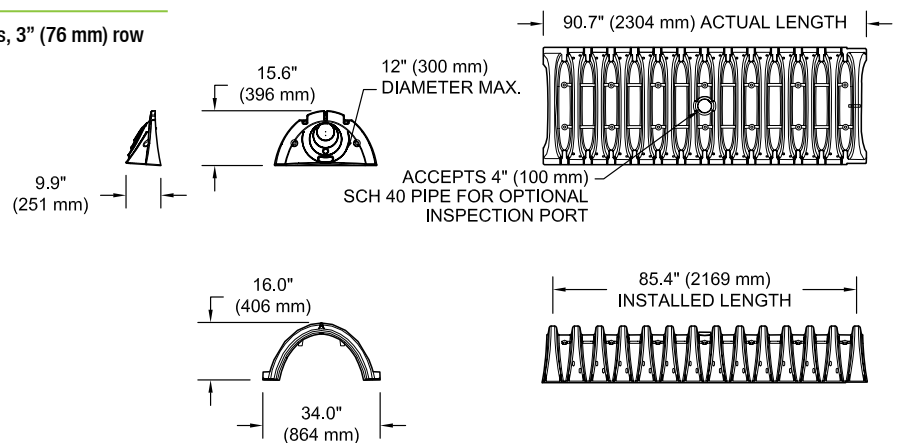
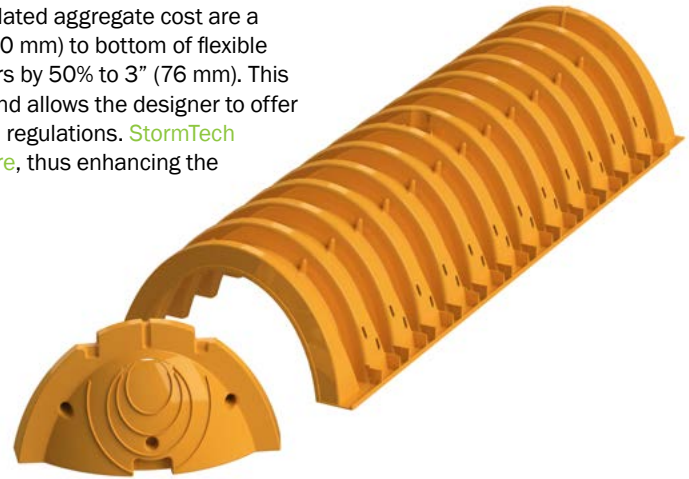
\*Assumes 6" (150 mm) stone above and below chambers, 3" (76 mm) row spacing and 40% stone porosity.

#### Shipping

41 chambers/pallet

108 end caps/pallet

18 pallets/truck



\*MINIMUM COVER TO BOTTOM OF FLEXIBLE PAVEMENT. FOR UNPAVED INSTALLATIONS WHERE RUTTING FROM VEHICLES MAY OCCUR, INCREASE COVER TO 24" (600 mm).

THE INSTALLED CHAMBER SYSTEM SHALL PROVIDE THE LOAD FACTORS SPECIFIED IN THE AASHTO LRFD BRIDGE DESIGN SPECIFICATIONS SECTION 12.12 FOR EARTH AND LIVE LOADS, WITH CONSIDERATION FOR IMPACT AND MULTIPLE VEHICLE PRESENCES.



### SC-310-3 CUMULATIVE STORAGE VOLUMES PER CHAMBER

Assumes 40% Stone Porosity. Calculations are Based Upon a 6" (150 mm) Stone Base Under Chambers.

Depth of Water in System Inches (mm)		Cumulative Chamber Storage ft <sup>3</sup> (m <sup>3</sup> )	Total System Cumulative Storage ft <sup>3</sup> (m <sup>3</sup> )
28 (711)		14.70 (0.416)	29.34 (0.831)
27 (686)		14.70 (0.416)	28.60 (0.810)
26 (660)		14.70 (0.416)	27.87 (0.789)
25 (635)	Stone	14.70 (0.416)	27.14 (0.769)
24 (610)	Cover	14.70 (0.416)	26.41 (0.748)
23 (584)		14.70 (0.416)	25.68 (0.727)
22 (559)		14.70 (0.416)	24.95 (0.707)
21 (533)		14.64 (0.415)	24.18 (0.685)
20 (508)		14.49 (0.410)	23.36 (0.661)
19 (483)		14.22 (0.403)	22.47 (0.636)
18 (457)		13.68 (0.387)	21.41 (0.606)
17 (432)		12.99 (0.368)	20.25 (0.573)
16 (406)		12.17 (0.345)	19.03 (0.539)
15 (381)		11.25 (0.319)	17.74 (0.502)
14 (356)		10.23 (0.290)	16.40 (0.464)
13 (330)		9.15 (0.260)	15.01 (0.425)
12 (305)		7.99 (0.226)	13.59 (0.385)
11 (279)		6.78 (0.192)	12.13 (0.343)
10 (254)		5.51 (0.156)	10.63 (0.301)
9 (229)		4.19 (0.119)	9.11 (0.258)
8 (203)		2.83 (0.080)	7.56 (0.214)
7 (178)		1.43 (0.041)	5.98 (0.169)
6 (152)		0 (0)	4.39 (0.124)
5 (127)		0 (0)	3.66 (0.104)
4 (102)	Stone	0 (0)	2.93 (0.083)
3 (76)	Foundation	0 (0)	2.19 (0.062)
2 (51)		0 (0)	1.46 (0.041)
1 (25)		0 (0)	0.73 (0.021)

**Note:** Add 0.73 ft<sup>3</sup> (0.021 m<sup>3</sup>) of storage for each additional inch (25 mm) of stone foundation.

### STORAGE VOLUME PER CHAMBER FT<sup>3</sup> (M<sup>3</sup>)

	Bare Chamber Storage ft <sup>3</sup> (m <sup>3</sup> )	Chamber and Stone Foundation Depth in. (mm)		
		6 (150)	12 (300)	18 (450)
SC-310-3 Chamber	14.7 (0.42)	29.3 (0.83)	33.7 (0.95)	38.1 (1.08)

**Note:** Assumes 6" (150 mm) of stone above chambers, 3" (76 mm) row spacing and 40% stone porosity.

### AMOUNT OF STONE PER CHAMBER

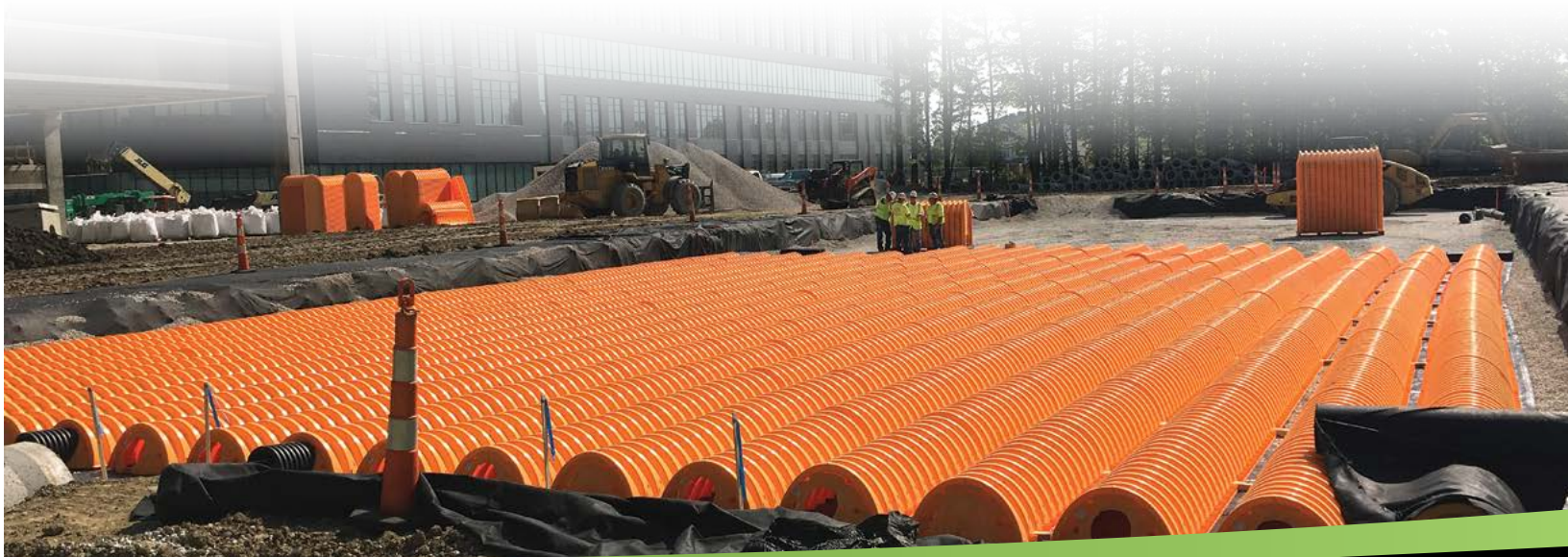
ENGLISH TONS (yds <sup>3</sup> )	Stone Foundation Depth		
	6"	12"	16"
SC-310-3	1.9 (1.4)	2.5 (1.8)	3.1 (2.2)
METRIC KILOGRAMS (m <sup>3</sup> )	150 mm	300 mm	450 mm
SC-310-3	1,724 (1.0)	2,268 (1.3)	2,812 (1.7)

**Note:** Assumes 6" (150 mm) of stone above and and 3" (76 mm) row spacing.

### VOLUME EXCAVATION PER CHAMBER YD<sup>3</sup> (M<sup>3</sup>)

	Stone Foundation Depth		
	6 (150)	12 (300)	18 (450)
SC-310-3	2.6 (2.0)	3.0 (2.0)	3.4 (2.6)

**Note:** Assumes 3" (76 mm) of row separation and 6" (150 mm) of stone above the chambers and 16" (400 mm) of cover. The volume of excavation will vary as depth of cover increases



## STORMTECH SC-740 CHAMBER

Designed to meet the most stringent industry performance standards for superior structural integrity while providing designers with a cost-effective method to save valuable land and protect water resources. The StormTech system is designed primarily to be used under parking lots, thus maximizing land usage for private (commercial) and public applications. StormTech chambers can also be used in conjunction with Green Infrastructure, thus enhancing the performance and extending the service life of these practices.

### StormTech SC-740 Chamber (not to scale)

#### Nominal Chamber Specifications

Size (L x W x H)	85.4" x 51.0" x 30.0" (2,170 x 1,295 x 762 mm)
Chamber Storage	45.9 ft <sup>3</sup> (1.30 m <sup>3</sup> )
Min. Installed Storage*	74.9 ft <sup>3</sup> (2.12 m <sup>3</sup> )
Weight	74.0 lbs (33.6 kg)

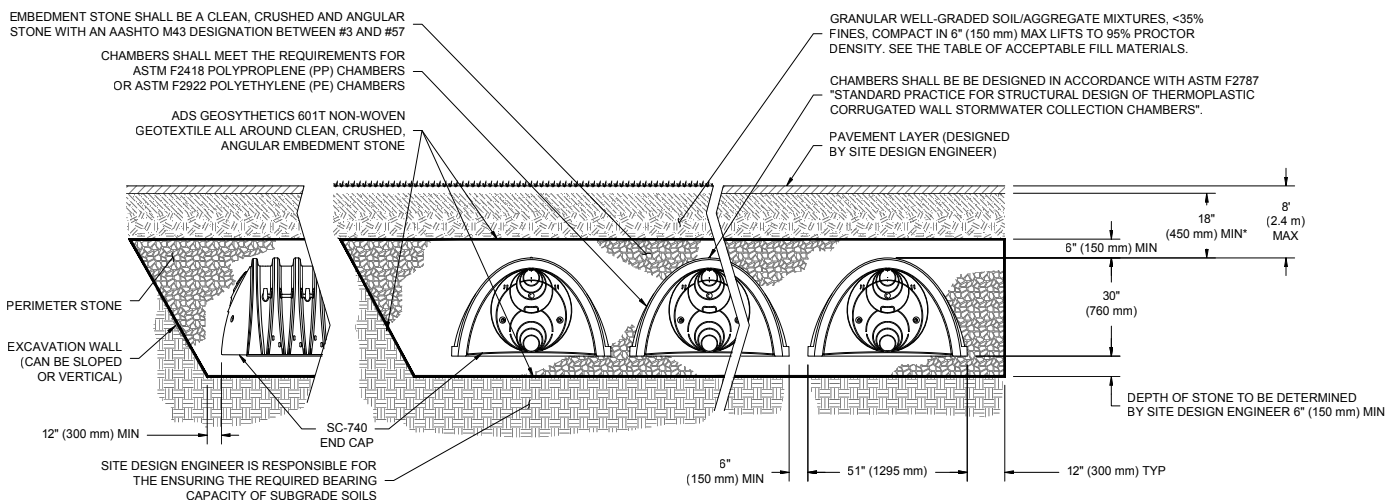
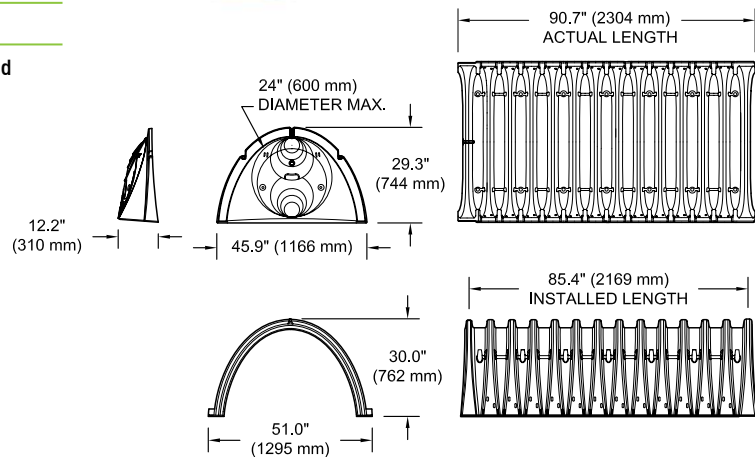
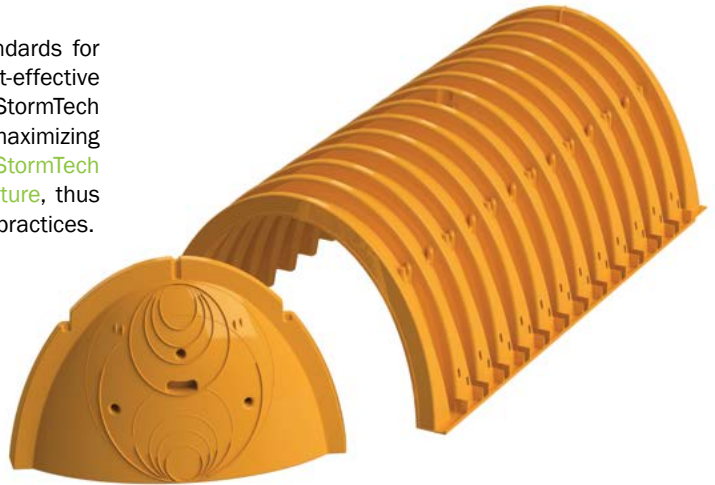
\*Assumes 6" (150 mm) stone above, below and between chambers and 40% stone porosity.

#### Shipping

30 chambers/pallet

60 end caps/pallet

12 pallets/truck



\*MINIMUM COVER TO BOTTOM OF FLEXIBLE PAVEMENT. FOR UNPAVED INSTALLATIONS WHERE RUTTING FROM VEHICLES MAY OCCUR, INCREASE COVER TO 24" (600 mm).

THE INSTALLED CHAMBER SYSTEM SHALL PROVIDE THE LOAD FACTORS SPECIFIED IN THE AASHTO LRFD BRIDGE DESIGN SPECIFICATIONS SECTION 12.12 FOR EARTH AND LIVE LOADS, WITH CONSIDERATION FOR IMPACT AND MULTIPLE VEHICLE PRESENCES.

## SC-740 CUMULATIVE STORAGE VOLUMES PER CHAMBER

Assumes 40% Stone Porosity. Calculations are Based Upon a 6" (150 mm) Stone Base Under Chambers.

Depth of Water in System Inches (mm)		Cumulative Chamber Storage ft <sup>3</sup> (m <sup>3</sup> )	Total System Cumulative Storage ft <sup>3</sup> (m <sup>3</sup> )
42 (1067)	Stone Cover	45.90 (1.300)	74.90 (2.121)
41 (1041)		45.90 (1.300)	73.77 (2.089)
40 (1016)		45.90 (1.300)	72.64 (2.057)
39 (991)		45.90 (1.300)	71.52 (2.025)
38 (965)		45.90 (1.300)	70.39 (1.993)
37 (940)		45.90 (1.300)	69.26 (1.961)
36 (914)		45.90 (1.300)	68.14 (1.929)
35 (889)		45.85 (1.298)	66.98 (1.897)
34 (864)		45.69 (1.294)	65.75 (1.862)
33 (838)		45.41 (1.286)	64.46 (1.825)
32 (813)		44.81 (1.269)	62.97 (1.783)
31 (787)		44.01 (1.246)	61.36 (1.737)
30 (762)		43.06 (1.219)	59.66 (1.689)
29 (737)		41.98 (1.189)	57.89 (1.639)
28 (711)		40.80 (1.155)	56.05 (1.587)
27 (686)		39.54 (1.120)	54.17 (1.534)
26 (660)		38.18 (1.081)	52.23 (1.479)
25 (635)		36.74 (1.040)	50.23 (1.422)
24 (610)		35.22 (0.977)	48.19 (1.365)
23 (584)		33.64 (0.953)	46.11 (1.306)
22 (559)		31.99 (0.906)	44.00 (1.246)
21 (533)		30.29 (0.858)	41.85 (1.185)
20 (508)		28.54 (0.808)	39.67 (1.123)
19 (483)		26.74 (0.757)	37.47 (1.061)
18 (457)		24.89 (0.705)	35.23 (0.997)
17 (432)		23.00 (0.651)	32.96 (0.939)
16 (406)		21.06 (0.596)	30.68 (0.869)
15 (381)		19.09 (0.541)	28.36 (0.803)
14 (356)		17.08 (0.484)	26.03 (0.737)
13 (330)		15.04 (0.426)	23.68 (0.670)
12 (305)	Stone Foundation	12.97 (0.367)	21.31 (0.608)
11 (279)		10.87 (0.309)	18.92 (0.535)
10 (254)		8.74 (0.247)	16.51 (0.468)
9 (229)		6.58 (0.186)	14.09 (0.399)
8 (203)		4.41 (0.125)	11.66 (0.330)
7 (178)		2.21 (0.063)	9.21 (0.264)
6 (152)		0 (0)	6.76 (0.191)
5 (127)		0 (0)	5.63 (0.160)
4 (102)		0 (0)	4.51 (0.128)
3 (76)		0 (0)	3.38 (0.096)
2 (51)		0 (0)	2.25 (0.064)
1 (25)		0 (0)	1.13 (0.032)

**Note:** Add 1.13 ft<sup>3</sup> (0.032 m<sup>3</sup>) of storage for each additional inch (25 mm) of stone foundation.

## STORAGE VOLUME PER CHAMBER FT<sup>3</sup> (M<sup>3</sup>)

	Bare Chamber Storage ft <sup>3</sup> (m <sup>3</sup> )	Chamber and Stone Foundation Depth in. (mm)		
		6 (150)	12 (300)	18 (450)
SC-740 Chamber	45.9 (1.3)	74.9 (2.1)	81.7 (2.3)	88.4 (2.5)

**Note:** Assumes 6" (150 mm) stone above chambers, 6" (150 mm) row spacing and 40% stone porosity.

## AMOUNT OF STONE PER CHAMBER

ENGLISH TONS (yds <sup>3</sup> )	Stone Foundation Depth		
	6"	12"	16"
SC-740	3.8 (2.8)	4.6 (3.3)	5.5 (3.9)
METRIC KILOGRAMS (m <sup>3</sup> )	150 mm	300 mm	450 mm
SC-740	3,450 (2.1)	4,170 (2.5)	4,490 (3.0)

**Note:** Assumes 6" (150 mm) of stone above and between chambers.

## VOLUME EXCAVATION PER CHAMBER YD<sup>3</sup> (M<sup>3</sup>)

	Stone Foundation Depth		
	6 (150)	12 (300)	18 (450)
SC-740	5.5 (4.2)	6.2 (4.7)	6.8 (5.2)

**Note:** Assumes 6" (150 mm) of row separation and 18" (450 mm) of cover. The volume of excavation will vary as depth of cover increases.

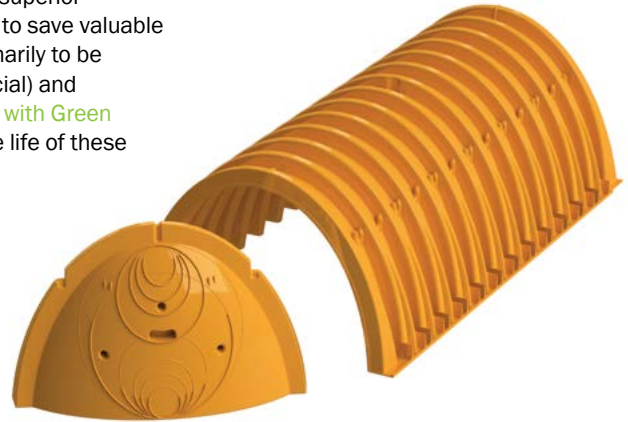




## STORMTECH DC-780 CHAMBER

Designed to meet the most stringent industry performance standards for superior structural integrity while providing designers with a cost-effective method to save valuable land and protect water resources. The StormTech system is designed primarily to be used under parking lots, thus maximizing land usage for private (commercial) and public applications. StormTech chambers can also be used in conjunction with Green Infrastructure, thus enhancing the performance and extending the service life of these practices.

- 12' (3.6 m) Deep Cover Applications
- Designed in accordance with ASTM F2787 and produced to meet the ASTM 2418 product standard.
- AASHTO safety factors provided for AASHTO Design Truck (H20 and deep cover conditions.)



### StormTech DC-780 Chamber (not to scale)

#### Nominal Chamber Specifications

Size (L x W x H)	85.4" x 51.0" x 30.0" (2169 x 1295 x 762 mm)
Chamber Storage	46.2 ft <sup>3</sup> (1.30 m <sup>3</sup> )
Min. Installed Storage*	78.4 ft <sup>3</sup> (2.2 m <sup>3</sup> )

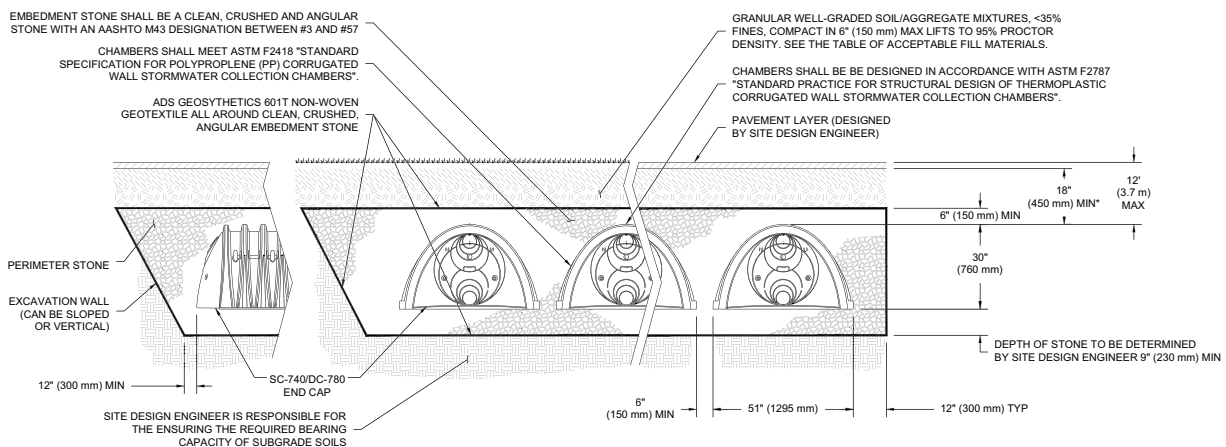
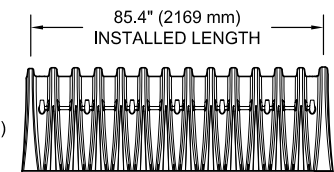
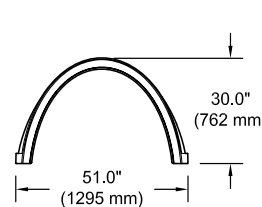
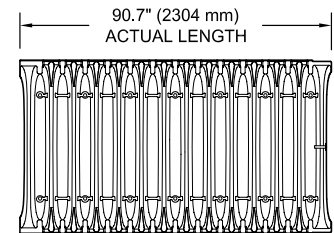
\*Assumes 9" (230 mm) stone below, 6" (150 mm) stone above, 6" (150 mm) row spacing and 40% stone porosity.

#### Shipping

24 chambers/pallet

60 end caps/pallet

12 pallets/truck



\*MINIMUM COVER TO BOTTOM OF FLEXIBLE PAVEMENT. FOR UNPAVED INSTALLATIONS WHERE RUTTING FROM VEHICLES MAY OCCUR, INCREASE COVER TO 24" (600 mm).

THE INSTALLED CHAMBER SYSTEM SHALL PROVIDE THE LOAD FACTORS SPECIFIED IN THE AASHTO LRFD BRIDGE DESIGN SPECIFICATIONS SECTION 12.12 FOR EARTH AND LIVE LOADS, WITH CONSIDERATION FOR IMPACT AND MULTIPLE VEHICLE PRESENCES.

## DC-780 CUMULATIVE STORAGE VOLUMES PER CHAMBER

Assumes 40% Stone Porosity. Calculations are Based Upon a 9" (230 mm) Stone Base Under Chambers.

Depth of Water in System Inches (mm)		Cumulative Chamber Storage ft <sup>3</sup> (m <sup>3</sup> )	Total System Cumulative Storage ft <sup>3</sup> (m <sup>3</sup> )
45 (1,143)	↑	46.27 (1.310)	78.47 (2.222)
44 (1,118)	↑	46.27 (1.310)	77.34 (2.190)
43 (1,092)	Stone	46.27 (1.310)	76.21 (2.158)
42 (1,067)	Cover	46.27 (1.310)	75.09 (2.126)
41 (1,041)	↓	46.27 (1.310)	73.96 (2.094)
40 (1,016)	↓	46.27 (1.310)	72.83 (2.062)
39 (991)	↓	46.27 (1.310)	71.71 (2.030)
38 (965)	↓	46.21 (1.309)	70.54 (1.998)
37 (940)	↓	46.04 (1.304)	69.32 (1.963)
36 (914)	↓	45.76 (1.296)	68.02 (1.926)
35 (889)	↓	45.15 (1.278)	66.53 (1.884)
34 (864)	↓	44.34 (1.255)	64.91 (1.838)
33 (838)	↓	43.38 (1.228)	63.21 (1.790)
32 (813)	↓	42.29 (1.198)	61.43 (1.740)
31 (787)	↓	41.11 (1.164)	59.59 (1.688)
30 (762)	↓	39.83 (1.128)	57.70 (1.634)
29 (737)	↓	38.47 (1.089)	55.76 (1.579)
28 (711)	↓	37.01 (1.048)	53.76 (1.522)
27 (686)	↓	35.49 (1.005)	51.72 (1.464)
26 (660)	↓	33.90 (0.960)	49.63 (1.405)
25 (635)	↓	32.24 (0.913)	47.52 (1.346)
24 (610)	↓	30.54 (0.865)	45.36 (1.285)
23 (584)	↓	28.77 (0.815)	43.18 (1.223)
22 (559)	↓	26.96 (0.763)	40.97 (1.160)
21 (533)	↓	25.10 (0.711)	38.72 (1.096)
20 (508)	↓	23.19 (0.657)	36.45 (1.032)
19 (483)	↓	21.25 (0.602)	34.16 (0.967)
18 (457)	↓	19.26 (0.545)	31.84 (0.902)
17 (432)	↓	17.24 (0.488)	29.50 (0.835)
16 (406)	↓	15.19 (0.430)	27.14 (0.769)
15 (381)	↓	13.10 (0.371)	24.76 (0.701)
14 (356)	↓	10.98 (0.311)	22.36 (0.633)
13 (330)	↓	8.83 (0.250)	19.95 (0.565)
12 (305)	↓	6.66 (0.189)	17.52 (0.496)
11 (279)	↓	4.46 (0.126)	15.07 (0.427)
10 (254)	↓	2.24 (0.064)	12.61 (0.357)

Depth of Water in System Inches (mm)		Cumulative Chamber Storage ft <sup>3</sup> (m <sup>3</sup> )	Total System Cumulative Storage ft <sup>3</sup> (m <sup>3</sup> )
9 (229)	↑	0 (0)	10.14 (0.287)
8 (203)	↑	0 (0)	9.01 (0.255)
7 (178)	↑	0 (0)	7.89 (0.223)
6 (152)	Stone Foundation	0 (0)	6.76 (0.191)
5 (127)	↓	0 (0)	5.63 (0.160)
4 (102)	↓	0 (0)	4.51 (0.128)
3 (76)	↓	0 (0)	3.38 (0.096)
2 (51)	↓	0 (0)	2.25 (0.064)
1 (25)	↓	0 (0)	1.13 (0.032)

Note: Add 1.13 ft<sup>3</sup> (0.032 m<sup>3</sup>) of Storage for Each Additional Inch (25 mm) of Stone Foundation.

### STORAGE VOLUME PER CHAMBER FT<sup>3</sup> (M<sup>3</sup>)

	Bare Chamber Storage ft <sup>3</sup> (m <sup>3</sup> )	Chamber and Stone Foundation Depth in. (mm)		
		9" (230 mm)	12" (300 mm)	18" (450 mm)
DC-780 Chamber	78.4 (2.2)	78.4 (2.2)	81.8 (2.3)	88.6 (2.5)

Note: Assumes 40% porosity for the stone, the bare chamber volume, 6" (150 mm) of stone above, and 6" (150 mm) row spacing.

### AMOUNT OF STONE PER CHAMBER

ENGLISH TONS (yds <sup>3</sup> )	Stone Foundation Depth		
	9"	12"	18"
DC-780 Chamber	4.2 (3.0)	4.7 (3.3)	5.6 (3.9)
METRIC KILOGRAMS (m <sup>3</sup> )	230 mm	300 mm	450 mm
DC-780 Chamber	3,810 (2.3)	4,264 (2.5)	5,080 (3.0)

Note: Assumes 9" (150 mm) of stone above, and between chambers.

### VOLUME EXCAVATION PER CHAMBER YD<sup>3</sup> (M<sup>3</sup>)

	Stone Foundation Depth		
	9" (230 mm)	12" (300 mm)	18" (450 mm)
DC-780 Chamber	5.9 (4.5)	6.3 (4.8)	6.9 (5.3)

Note: Assumes 6" (150 mm) separation between chamber rows and 18" (450 mm) of cover. The volume of excavation will vary as depth of cover increases.



## STORMTECH MC-3500 CHAMBER

Designed to meet the most stringent industry performance standards for superior structural integrity while providing designers with a cost-effective method to save valuable land and protect water resources. The StormTech system is designed primarily to be used under parking lots, thus maximizing land usage for private (commercial) and public applications. StormTech chambers can also be used in conjunction with Green Infrastructure, thus enhancing the performance and extending the service life of these practices.

### StormTech MC-3500 Chamber (not to scale)

#### Nominal Chamber Specifications

Size (L x W x H)	90" x 77" x 45" (2,286 x 1,956 x 1,143 mm)
Chamber Storage	109.9 ft <sup>3</sup> (3.11 m <sup>3</sup> )
Min. Installed Storage*	175.0 ft <sup>3</sup> (4.96 m <sup>3</sup> )
Weight	134 lbs (60.8 kg)

\*Assumes a minimum of 12" (300 mm) of stone above, 9" (230 mm) of stone below chambers, 9" (230 mm) of stone between chambers/end caps and 40% stone porosity.

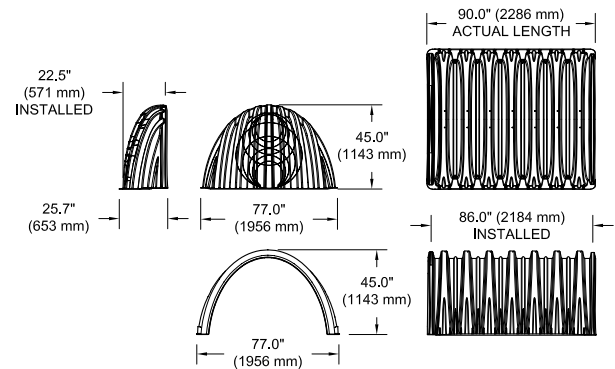


### StormTech MC-3500 End Cap (not to scale)

#### Nominal Chamber Specifications

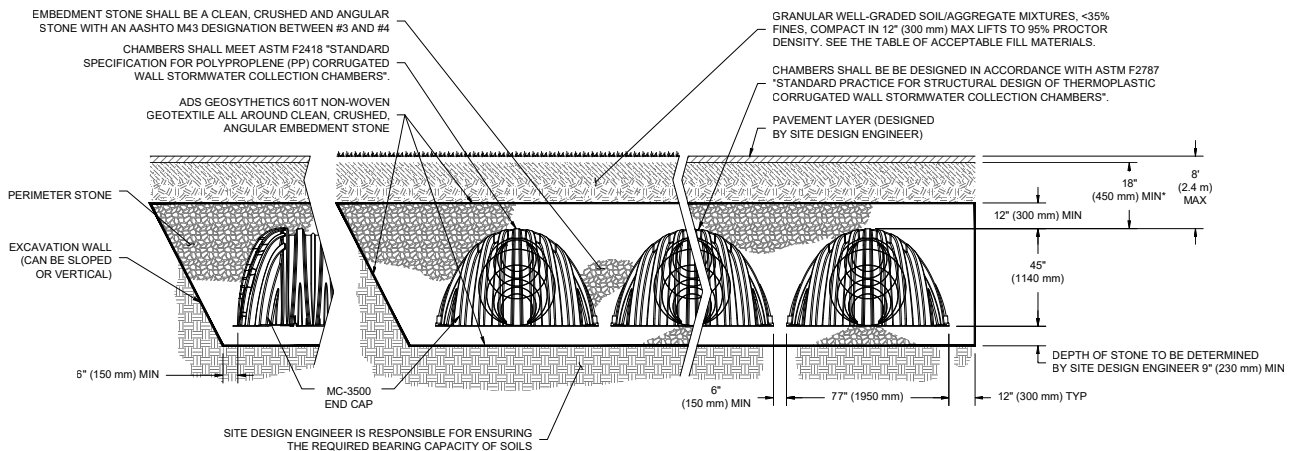
Size (L x W x H)	26.5" x 71" x 45.1" (673 x 1,803 x 1,145 mm)
End Cap Storage	14.9 ft <sup>3</sup> (0.42 m <sup>3</sup> )
Min. Installed Storage*	45.1 ft <sup>3</sup> (1.28 m <sup>3</sup> )
Weight	49 lbs (22.2 kg)

\*Assumes a minimum of 12" (300 mm) of stone above, 9" (230 mm) of stone below, 6" (150 mm) of stone perimeter, 6" (150 mm) of stone between chambers/end caps and 40% stone porosity.



### Shipping

15 chambers/pallet	7 end caps/pallet	7 pallets/truck
--------------------	-------------------	-----------------



\*MINIMUM COVER TO BOTTOM OF FLEXIBLE PAVEMENT. FOR UNPAVED INSTALLATIONS WHERE RUTTING FROM VEHICLES MAY OCCUR, INCREASE COVER TO 24" (600 mm).

THE INSTALLED CHAMBER SYSTEM SHALL PROVIDE THE LOAD FACTORS SPECIFIED IN THE AASHTO LRFD BRIDGE DESIGN SPECIFICATIONS SECTION 12.12 FOR EARTH AND LIVE LOADS, WITH CONSIDERATION FOR IMPACT AND MULTIPLE VEHICLE PRESENCES.



### STORAGE VOLUME PER CHAMBER FT<sup>3</sup> (M<sup>3</sup>)

	Bare Chamber Storage ft <sup>3</sup> (m <sup>3</sup> )	Chamber and Stone Foundation Depth in. (mm)			
		9" (230 mm)	12" (300 mm)	15" (375 mm)	18" (450 mm)
MC-3500 Chamber	109.9 (3.11)	175.0 (4.96)	179.9 (5.09)	184.9 (5.24)	189.9 (5.38)
MC-3500 End Cap	14.9 (.42)	45.1 (1.28)	46.6 (1.32)	48.3 (1.37)	49.9 (1.41)

**Note:** Assumes 6" (150 mm) row spacing, 40% stone porosity, 12" (300 mm) stone above and includes the bare chamber/end cap volume.

### AMOUNT OF STONE PER CHAMBER

ENGLISH TONS (yds <sup>3</sup> )	Stone Foundation Depth			
	9"	12"	15"	18"
MC-3500 Chamber	8.5 (6.0)	9.1 (6.5)	9.7 (6.9)	10.4 (7.4)
MC-3500 End Cap	3.9 (2.8)	4.1 (2.9)	4.3 (3.1)	4.5 (3.2)
METRIC KILOGRAMS (m <sup>3</sup> )	230 mm	300 mm	375 mm	450 mm
MC-3500 Chamber	7711 (4.6)	8255 (5.0)	8800 (5.3)	9435 (5.7)
MC-3500 End Cap	3538 (2.1)	3719 (2.2)	3901 (2.4)	4082 (2.5)

**Note:** Assumes 12" (300 mm) of stone above and 6" (150 mm) row spacing and 6" (150 mm) of perimeter stone in front of end caps.

### VOLUME EXCAVATION PER CHAMBER YD<sup>3</sup> (M<sup>3</sup>)

	Stone Foundation Depth			
	9" (230 mm)	12" (300 mm)	15" (375mm)	18" (450 mm)
MC-3500 Chamber	11.9 (9.1)	12.4 (9.5)	12.8 (9.8)	13.3 (10.2)
MC-3500 End Cap	4.0 (3.1)	4.1 (3.2)	4.3 (3.3)	4.4 (3.4)

**Note:** Assumes 6" (150 mm) of separation between chamber rows and 24" (600 mm) of cover. The volume of excavation will vary as depth of cover increases.



## STORMTECH MC-4500 CHAMBER

Designed to meet the most stringent industry performance standards for superior structural integrity while providing designers with a cost-effective method to save valuable land and protect water resources. The StormTech system is designed primarily to be used under parking lots, thus maximizing land usage for private (commercial) and public applications. StormTech chambers can also be used in conjunction with Green Infrastructure, thus enhancing the performance and extending the service life of these practices.

### StormTech MC-4500 Chamber (not to scale)

#### Nominal Chamber Specifications

Size (L x W x H)	52" x 100" x 60" (1321 x 2540 x 1524 mm)
Chamber Storage	106.5 ft <sup>3</sup> (3.01 m <sup>3</sup> )
Min. Installed Storage*	162.6 ft <sup>3</sup> (4.60 m <sup>3</sup> )
Weight	Nominal 125 lbs (56.7 kg)

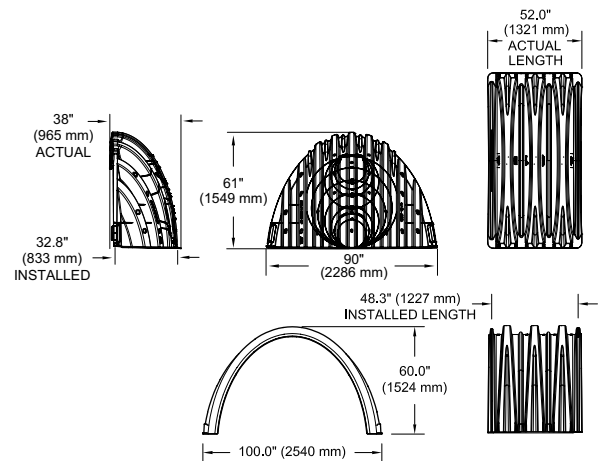
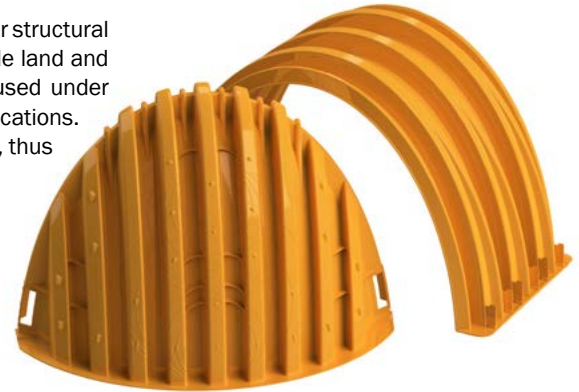
\*Assumes a minimum of 12" (300 mm) of stone above, 9" (230 mm) of stone below chambers, 9" (230 mm) of stone between chambers/end caps and 40% stone porosity.

### StormTech MC-4500 End Cap (not to scale)

#### Nominal Chamber Specifications

Size (L x W x H)	38" x 90" x 61" (965 x 2286 x 1549 mm)
End Cap Storage	39.5 ft <sup>3</sup> (1.12 m <sup>3</sup> )
Min. Installed Storage*	115.3 ft <sup>3</sup> (3.26 m <sup>3</sup> )
Weight	Nominal 90.0 lbs (40.8 kg)

\*Assumes a minimum of 12" (300 mm) of stone above, 9" (230 mm) of stone below, 12" (300 mm) of stone perimeter, 9" (230 mm) of stone between chambers/end caps and 40% stone porosity.

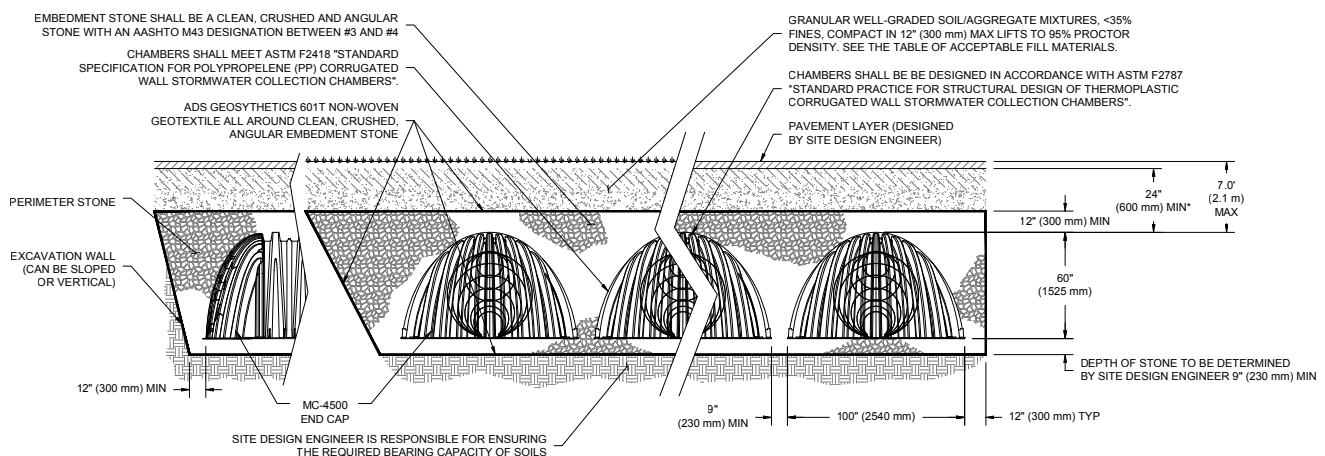


## Shipping

7 chambers/pallet

7 end caps/pallet

11 pallets/truck



\*MINIMUM COVER TO BOTTOM OF FLEXIBLE PAVEMENT. FOR UNPAVED INSTALLATIONS WHERE RUTTING FROM VEHICLES MAY OCCUR, INCREASE COVER TO 30" (750 mm).



### STORAGE VOLUME PER CHAMBER FT<sup>3</sup> (M<sup>3</sup>)

	Bare Chamber Storage ft <sup>3</sup> (m <sup>3</sup> )	Chamber and Stone Foundation Depth in. (mm)			
		9" (230 mm)	12" (300 mm)	15" (375 mm)	18" (450 mm)
MC-4500 Chamber	106.5 (3.01)	162.6 (4.60)	166.3 (4.71)	169.9 (4.81)	173.6 (4.91)
MC-4500 End Cap	39.5 (1.12)	115.3 (3.26)	118.6 (3.36)	121.9 (3.45)	125.2 (3.54)

**Note:** Assumes 9" (230 mm) row spacing, 40% stone porosity, 12" (300 mm) stone above and includes the bare chamber/end cap volume. End cap volume assumes 12" (300 mm) stone perimeter in front of end cap.

### AMOUNT OF STONE PER CHAMBER

ENGLISH TONS (yds <sup>3</sup> )	Stone Foundation Depth			
	9"	12"	15"	18"
MC-4500 Chamber	7.4 (5.2)	7.8 (5.5)	8.3 (5.9)	8.8 (6.2)
MC-4500 End Cap	9.8 (7.0)	10.2 (7.3)	10.6 (7.6)	11.1 (7.9)
METRIC KILOGRAMS (m <sup>3</sup> )	230 mm	300 mm	375 mm	450 mm
MC-4500 Chamber	6713 (4.0)	7076 (4.2)	7529 (4.5)	7983 (4.7)
MC-4500 End Cap	8890 (5.3)	9253 (5.5)	9616 (5.8)	10069 (6.0)

**Note:** Assumes 12" (300 mm) of stone above and 9" (230 mm) row spacing and 12" (300 mm) of perimeter stone in front of end caps.

### VOLUME EXCAVATION PER CHAMBER YD<sup>3</sup> (M<sup>3</sup>)

	Stone Foundation Depth			
	9" (230 mm)	12" (300 mm)	15" (375mm)	18" (450 mm)
MC-4500 Chamber	10.5 (8.0)	10.8 (8.3)	11.2 (8.5)	11.5 (8.8)
MC-4500 End Cap	9.7 (7.4)	10.0 (7.6)	10.3 (7.9)	10.6 (8.1)

**Note:** Assumes 9" (230 mm) of separation between chamber rows, 12" (300 mm) of perimeter in front of the end caps, and 24" (600 mm) of cover. The volume of excavation will vary as depth of cover increases.





## STORMTECH ISOLATOR ROW® PLUS

An important component of any Stormwater Pollution Prevention Plan is inspection and maintenance. The StormTech Isolator Row PLUS is a technique to inexpensively enhance Total Suspended Solids (TSS) removal and provide easy access for inspection and maintenance.

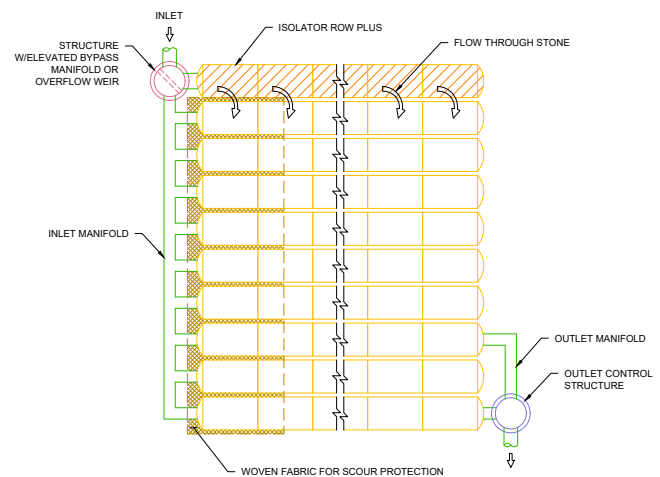
The Isolator Row PLUS is a row of StormTech chambers that is typically surrounded with filter fabric and connected to a closely located manhole for easy access. The fabric-wrapped chambers provide for settling and filtration of sediment as stormwater rises in the Isolator Row PLUS and ultimately passes through the filter fabric. The open bottom chambers and perforated sidewalls (SC-310, SC-310-3, and SC-740 models) allow stormwater to flow both vertically and horizontally out of the chambers. Sediments are captured in the Isolator Row PLUS, protecting the storage areas of the adjacent stone and chambers from sediment accumulation.

Two different fabrics are used for the Isolator Row PLUS. A single layer of ADS PLUS fabric is placed between the stone and the chambers. The fabric provides a media for stormwater filtration and provides a durable surface for maintenance operations. It is also designed to prevent scour of the underlying stone and remain intact during high pressure jetting. A non-woven fabric is placed over the chambers to provide a filter media for flows passing through the perforations in the sidewall of the chamber. The non-woven fabric is not required over the DC-780, MC-3500 or MC-4500 models as these chambers do not have perforated side walls.

The Isolator Row PLUS is typically designed to capture the “first flush” and offers the versatility to be sized on a volume basis or flow rate basis. An upstream manhole not only provides access to the Isolator Row PLUS, but typically includes a high flow weir such that stormwater flow rates or volumes that exceed the capacity of the Isolator Row PLUS crest the weir and discharge through a manifold to the other chambers. An alternative design using a “high/low” concept is an acceptable method. This creates a differential between the Isolator Row PLUS and the manifold thus allowing for settlement time in the Isolator Row PLUS.

The Isolator Row PLUS may also be part of a treatment train. By treating stormwater prior to entry into the chamber system, the service life can be extended and pollutants such as hydrocarbons can be captured. Pre-treatment best management practices can be as simple as deep sump catch basins and oil-water separators or can be innovative stormwater treatment devices. The design of the treatment train and selection of pretreatment devices by the design engineer is often driven by regulatory requirements. Whether pretreatment is used or not, the Isolator Row PLUS is recommended by StormTech as an effective means to minimize maintenance requirements and maintenance costs.

**Note:** See the StormTech Design Manual for detailed information on designing inlets for a StormTech system, including the Isolator Row PLUS.



**StormTech Isolator  
Row PLUS Schematic  
(not to scale)**

**Note:** Non-woven fabric is only required over the inlet pipe connection into the end cap for DC-780, MC-3500 and MC-4500 chamber models and is not required over the entire Isolator Row PLUS.

## INSPECTION

The frequency of Inspection and Maintenance varies by location. A routine inspection schedule needs to be established for each individual location based upon site specific variables. The type of land use (i.e. industrial, commercial, public, residential) anticipated pollutant load, percent imperviousness, climate, rain fall data, etc. all play a critical role in determining the actual frequency of inspection and maintenance practices.

At a minimum, StormTech recommends annual inspections. Initially, the Isolator Row PLUS should be inspected every 6 months for the first year of operation. For subsequent years, the inspection should be adjusted based upon previous observation of sediment deposition.

The Isolator Row PLUS incorporates a combination of standard manhole(s) and strategically located inspection ports (as needed). The inspection ports allow for easy access to the system from the surface, eliminating the need to perform a confined space entry for inspection purposes.

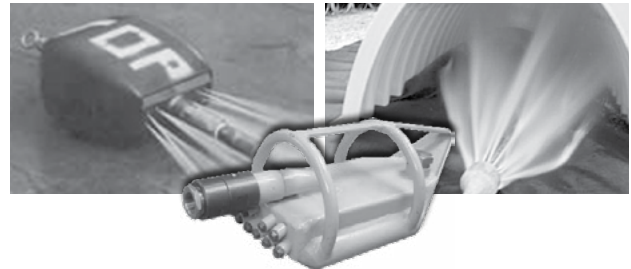
If, upon visual inspection it is found that sediment has accumulated, a stadia rod should be inserted to determine the depth of sediment. When the average depth of sediment exceeds 3 inches throughout the length of the Isolator Row PLUS, clean-out should be performed.

## MAINTENANCE

The Isolator Row PLUS was designed to reduce the cost of periodic maintenance. By “isolating” sediments to just one row, costs are dramatically reduced by eliminating the need to clean out each row of the entire storage bed. If inspection indicates the potential need for maintenance, access is provided via a manhole(s) located on the end(s) of the row for cleanout. If entry into the manhole is required, please follow local and OSHA rules for confined space entries.

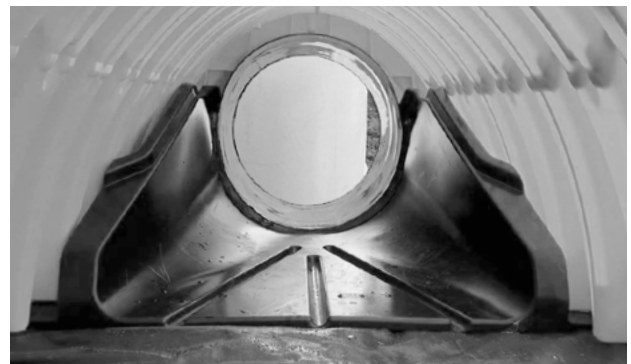
Maintenance is accomplished with the jetvac process. The jetvac process utilizes a high pressure water nozzle to propel itself down the Isolator Row PLUS while scouring and suspending sediments. As the nozzle is retrieved, the captured pollutants are flushed back into the manhole for vacuuming. Most sewer and pipe maintenance companies have vacuum/jetvac combination vehicles. Selection of an appropriate jetvac nozzle will improve maintenance efficiency. Fixed nozzles designed for culverts or large diameter pipe cleaning are preferable. Rear facing jets with an effective spread of at least 45° are

best. Most jetvac reels have 400 feet of hose allowing maintenance of an Isolator Row PLUS up to 50 chambers long. The jetvac process shall only be performed on StormTech Isolator PLUS rows that have ADS PLUS fabric over their angular base stone. JetVac nozzle pressures should be limited to 2000 psi.

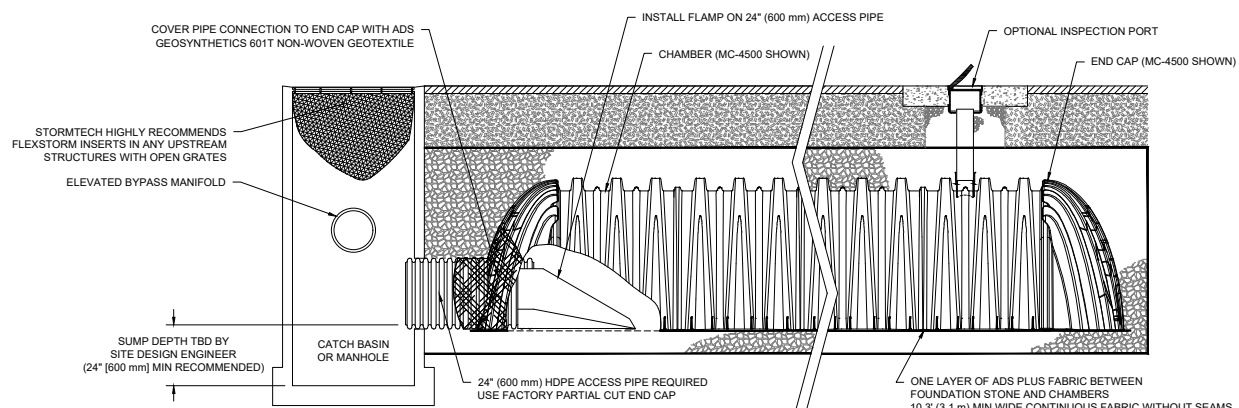


**Examples of culvert cleaning nozzles appropriate for Isolator Row PLUS maintenance. (These are not StormTech products.)**

A FLAMP (fared end ramp) is attached to the inlet pipe on the inside of the chamber end cap to provide a smooth transition from pipe invert to fabric bottom. It is configured to improve chamber function performance over time by distributing sediment and debris that would otherwise collect at the inlet. It also serves to improve the fluid and solid flow back into the inlet pipe during maintenance and cleaning, and to guide cleaning and inspection equipment back into the inlet pipe when complete.



## Isolator Row PLUS Detail



## A FAMILY OF PRODUCTS AND SERVICES

- MC-4500 Chambers and End Caps
- MC-3500 Chambers and End Caps
- SC-310 Chambers and End Caps
- SC-310-3 Chambers and End Caps
- DC-780 Chambers and End Caps
- SC-740 Chambers and End Caps
- SC-160LP Chambers and End Caps
- SC, DC and MC Fabricated End Caps
- Fabricated Manifold Fittings
- Patented Isolator Row PLUS for Maintenance and Water Quality
- Inserta Tee® Connections
- Nyloplast® Basins and Inline Drains
- Flexstorm® Inserts
- In-House System Layout Assistance
- On-Site Educational Seminars
- Worldwide Technical Sales Group
- Centralized Product Applications Department
- Research and Development Team
- Technical Literature, O&M Manuals and Detailed CAD drawings all downloadable via our Web Site
- StormTech Design Tool



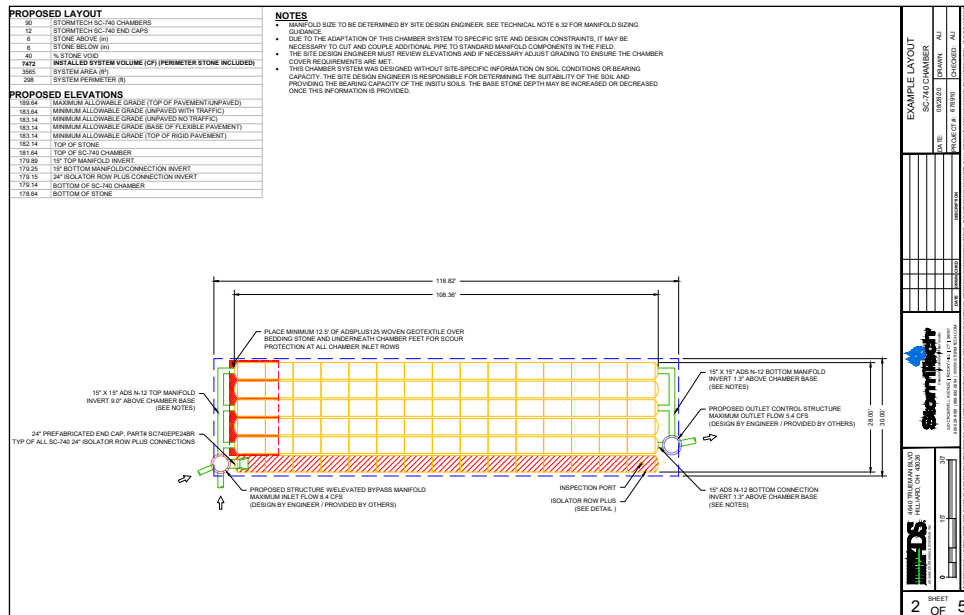
**StormTech provides state-of-the-art products and services that meet or exceed industry performance standards and expectations. We offer designers, regulators, owners and contractors the highest quality products and services for stormwater management that “Saves Valuable Land and Protects Water Resources.”**



Please contact one of our inside Technical Service professionals or Engineered Product Managers (EPMs) to discuss your particular application.

A wide variety of technical support material is available from our website at [www.stormtech.com](http://www.stormtech.com).

For any questions, please call StormTech at 888-892-2694.

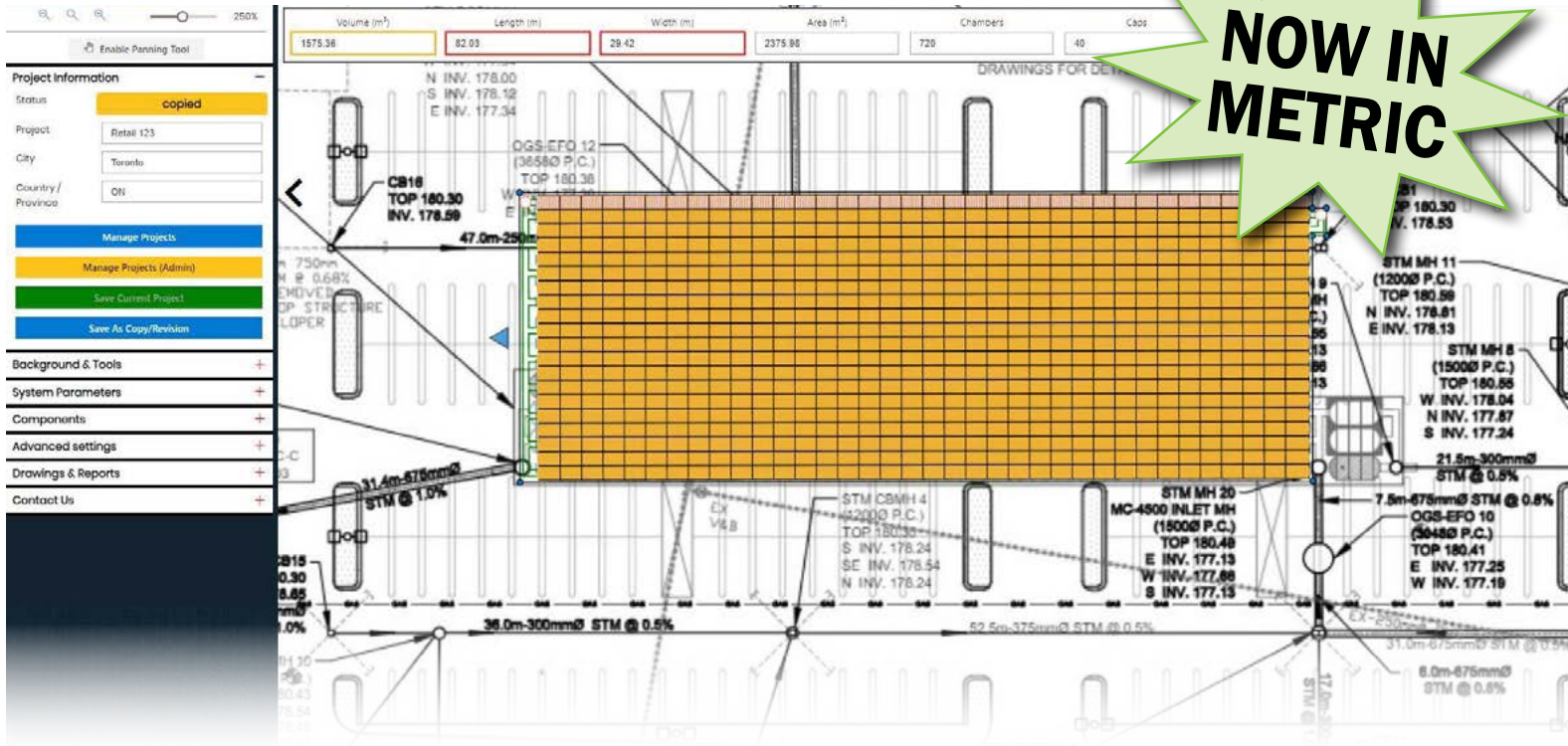






# READY FOR TODAY'S FAST-PACED BUSINESS ENVIRONMENT

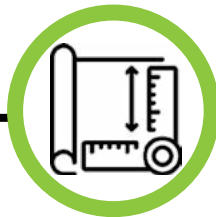
**NOW IN METRIC**



Generate quick layouts



Import site plans & maps



Customize layouts



Save, manage, revise



Estimates for projects

  
**StormTech®**

Working on a project?

Visit [www.stormtech.com](http://www.stormtech.com) and utilize the enhanced ADS Design Tool 2.0

ADVANCED DRAINAGE SYSTEMS, INC.  
800-821-6710 [www.ads-pipe.com](http://www.ads-pipe.com)

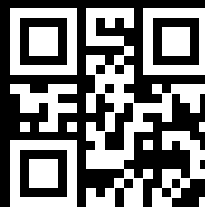




## Save Valuable Land and Protect Water Resources

*This catalog is not intended to provide requirements for design or installation of StormTech chambers. Refer to the appropriate "StormTech Design Manual" and "StormTech Construction Guide" for design and installation specifications.*

**SiteASSIST™**  
by StormTech®



Advanced Drainage Systems, Inc.  
4640 Trueman Blvd. Hilliard, OH 43026

1-800-821-6710

[www.ads-pipe.com](http://www.ads-pipe.com)



THE MOST **ADVANCED** NAME IN WATER MANAGEMENT SOLUTIONS®